



QINGDAO LONGMAX TYRE CO.,LTD.
 Add:7F,No.288 Shuangzhu Road,Huangdao,Qingdao,China.266400
 Tel:0086-532-55588070,Fax:0086-532-55588060
 E-mail:sales@longmaxtyre.com
 Http:www.longmaxtyre.com



PCR/LTR CATALOGUE



QINGDAO LONGMAX TYRE CO.,LTD

A BETTER WAY FORWARD



**PRODUCT
DATA GUIDE**

GP-16

ECONOMIC



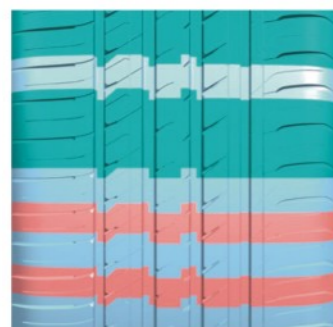
Cost-effective with long endurance

Wear-resistant tread formula can effectively improve mileage and service life.

Tread reinforced block reduces rolling resistance, more cost-effective and fuel-saving.

SIZE	Loading Index	Standard Load (kg)	Speed Rating	Standard Rim	Section Width (mm)	Overall Diameter (mm)	Inflation pressure (kPa)	UTQG
155/65R13	73	365	T	4 1/2J	157	532	300	360 A A
155/70R13	75	387	T	4 1/2J	157	548	300	360 A A
155/80R13	79	437	T	4 1/2J	157	578	300	360 A A
165/70R13	79	437	T	5J	170	562	300	360 A A
165/65R13	77	412	T	5J	170	544	300	360 A A
165/80R13	83	487	T	4 1/2J	165	594	300	360 A A
175/70R13	82	475	T	5J	177	576	300	360 A A
185/70R13	86	530	T	5 1/2J	189	590	300	360 A A
155/65R14	75	387	T	4 1/2J	157	558	300	360 A A
165/70R14	85 XL	515	T	5J	170	588	340	360 A A
165/65R14	79	437	T	5J	170	570	300	360 A A
165/60R14	75	387	H	5J	170	554	300	360 A A
175/65R14	82	475	T	5J	177	584	300	360 A A
175/65R14	86 XL	530	H	5J	177	584	340	360 A A
175/70R14	84	500	T	5J	177	602	300	360 A A
185/65R14	86	530	H	5 1/2J	189	596	300	360 A A
185/60R14	82	475	H	5 1/2J	189	578	300	360 A A
185/70R14	88	560	T	5 1/2J	189	616	300	360 A A
185/55R14	80	450	H	6J	194	560	300	360 A A
195/70R14	91	615	T	6J	201	630	300	360 A A
195/60R14	86	530	H	6J	201	590	300	360 A A
175/65R15	84	500	H	5J	177	609	300	360 A A
185/65R15	88	560	H	5 1/2J	189	621	300	360 A A
185/60R15	88 XL	560	H	5 1/2J	189	603	340	360 A A
185/55R15	82	475	V	6J	194	585	300	360 A A
195/65R15	91	615	V/H	6J	201	635	300	360 A A
195/60R15	88	560	V	6J	201	615	300	360 A A
195/55R15	85	515	V	6J	201	595	300	360 A A
195/50R15	82	475	V	6J	201	577	300	360 A A
205/65R15	94	670	H	6J	209	647	300	360 A A
205/60R15	91	615	V	6J	209	627	300	360 A A
215/70R15	98	750	T	6 1/2J	221	683	300	360 A A
215/65R15	100 XL	800	H	6 1/2J	221	661	340	360 A A
225/60R15	96	710	V	6 1/2J	228	651	300	360 A A

GR-66 SPORT



Safety and Comfort

Computer-optimized circumferential layout design, with multi-pitch block pattern, reduces noise effectively.

SIZE	Loading Index	Standard Load (kg)	Speed Rating	Standard Rim	Section Width (mm)	Overall Diameter (mm)	Inflation pressure (kPa)	UTQG
185/55R16	83	487	V	6J	194	610	300	380 A A
195/55R16	87	545	V	6J	201	620	300	380 A A
205/55R16	91	615	V/W	6 1/2J	214	632	300	380 A A
205/55R16	94 XL	670	W	6 1/2J	214	632	340	380 A A
205/60R16	92	630	H	6J	209	652	300	380 A A
205/65R16	95	690	H	6J	209	672	300	380 A A
215/60R16	95	690	H	6 1/2J	221	664	300	380 A A
215/55R16	97 XL	730	W	7J	226	642	340	380 A A
225/60R16	98	750	V	6 1/2J	228	676	300	380 A A
205/40R17	84 XL	500	W	7 1/2J	212	596	340	380 A A
205/45R17	88 XL	560	W	7J	206	616	340	380 A A
205/50R17	93 XL	650	W	6 1/2J	214	638	340	380 A A
215/45R17	91 XL	615	W	7J	213	626	340	380 A A
215/55R17	98 XL	750	W	7J	226	668	340	380 A A
215/50R17	95 XL	690	W	7J	226	648	340	380 A A
225/45R17	94 XL	670	W	7 1/2J	225	634	340	380 A A
225/50R17	98 XL	750	W	7J	233	658	340	380 A A
225/55R17	101 XL	825	W	7J	233	680	340	380 A A
235/45R17	97 XL	730	W	8J	236	644	340	380 A A
225/40R18	92 XL	630	W	8J	230	637	340	380 A A
235/40R18	95 XL	690	W	8 1/2J	241	645	340	380 A A
245/45R18	100 XL	800	W	8J	243	677	340	380 A A
225/35R20	93 XL	600	W	8J	230	666	340	380 A A
245/35R20	95 XL	690	W	8 1/2J	248	680	340	380 A A
245/45R20	103XL	875	W	8J	243	728	340	380 A A
275/40R20	106 XL	950	W	9 1/2J	278	728	340	380 A A
195/45R16	84 XL	500	V	6 1/2J	195	582	340	380 A A
205/45R16	87 XL	545	W	7J	206	590	340	380 A A
235/60R16	100	800	H	7J	240	688	300	380 A A
215/40R18	89 XL	580	W	7 1/2J	218	629	340	380 A A
235/45R18	98 XL	750	W	8J	236	669	340	380 A A
245/40R18	97 XL	730	W	8 1/2J	248	653	340	380 A A
225/35R19	88 XL	560	W	8J	230	641	340	380 A A
235/35R19	91 XL	615	W	8 1/2J	241	647	340	380 A A
245/40R19	98 XL	750	W	8 1/2J	248	679	340	380 A A

GX-01

UHP



GC-78

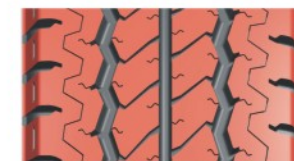
LTR



Excellent Handling

Quick steering response provides better handling.

Large shoulder block pattern ensures excellent grip and shorter braking distance in normal weather conditions.



Strong Load Capacity & Wear Resistance

Wider contact area, bigger blocks and computer optimized simulation analysis improves strong load capacity and safety.

Wear-proof formula enhance tire service life.

SIZE	Loading Index	Standard Load (kg)	Speed Rating	Standard Rim	Section Width (mm)	Overall Diameter (mm)	Inflation pressure (kPa)	UTQG
265/50R20	111 XL	1090	V	8 1/2J	277	774	340	400 A A
235/30R22	90 XL	600	W	8 1/2J	242	701	340	400 A A
265/35R22	102 XL	850	V	9 1/2J	271	745	340	400 A A
265/40R22	106 XL	950	V	9 1/2J	271	771	340	400 A A
305/40R22	114 XL	1180	V	11J	313	803	340	400 A A
305/45R22	118 XL	1320	V	10J	303	833	340	400 A A
305/35R24	112 XL	1120	V	11J	313	824	340	400 A A

SIZE	Loading Index	Standard Load (kg)	Speed Rating	Standard Rim	Section Width (mm)	Overall Diameter (mm)	Inflation pressure (kPa)
165R13C	91/89	615/580	S	4.50B	167	596	375
185R14C	102/100	850/800	R	5 1/2J	189	652	450
195R14C	106/104	950/900	R	5 1/2J	198	666	450
195R15C	106/104	950/900	N	5 1/2J	198	690	450
7.00R16LT	115/110	1215/1060	M	5.50F	200	775	670
195/70R15C	104/102	755/710	R	6 J	201	655	450
205/70R15C	106/104	950/900	R	6J	206	669	450
225/70R15C	112/110	975/875	S	6 1/2J	228	697	450
215/75R16C	113/111	1150/1090	R	6 J	216	728	475
245/75R16C	120/116	1400/1250	S	7J	248	774	550
265/70R17C	118/115	1320/1215	S	8J	272	804	450

GS-07 H/T

H/T SUV



GS-37 A/T

A/T SUV



Safety

More slots design and special formula shortens braking distance either in dry and wet condition.

SIZE	Loading Index	Standard Load (kg)	Speed Rating	Standard Rim	Section Width (mm)	Overall Diameter (mm)	Inflation pressure (kPa)	UTQG
235/75R15	109 XL	1030	T	6 1/2J	235	733	340	420 A A
215/65R16	98	750	H	6 1/2J	221	686	300	420 A A
215/70R16	100	800	H	6 1/2J	221	708	300	420 A A
245/70R16	111 XL	1090	T	7J	248	750	340	420 A A
215/60R17	96	710	H	6 1/2J	221	690	300	420 A A
225/65R17	102	850	T	6 1/2J	228	724	300	420 A A
225/60R17	99	775	H	6 1/2J	228	702	300	420 A A
265/70R17	115	1215	T	8J	272	804	300	420 A A
235/55R18	104 XL	900	V	7 1/2J	245	715	340	420 A A
235/60R18	107 XL	975	V	7J	240	739	340	420 A A
265/60R18	110	1060	H	8J	272	775	300	420 A A
275/60R20	115	1215	T	8J	279	838	300	420 A A
275/55R20	117 XL	1285	H	8 1/2J	284	810	340	420 A A



Strong Grip Power

The design of zigzag ditch pattern is fit for various harsh road conditions.

Design of continuous inclined grooves provides effective drainage function, with stable grip.

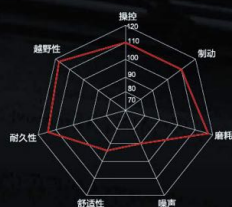
SIZE	Loading Index	Standard Load (kg)	Speed Rating	Standard Rim	Section Width (mm)	Overall Diameter (mm)	Inflation pressure (kPa)	UTQG
235/70R16	106	950	T	7J	240	736	300	560 A A
265/70R16	112	1120	T	8J	272	778	300	560 A A
275/70R16	114	1180	S	8J	279	792	300	560 A A
265/65R17	112	1120	S	8J	272	776	300	560 A A
275/65R17	115	1215	S	8J	279	790	300	560 A A
285/65R17	116	1250	S	8 1/2J	292	802	300	560 A A
255/50R18	106 XL	950	H	8J	265	713	340	560 A A
265/40R18	101 XL	825	H	9 1/2J	271	669	340	560 A A

YUNCHANG **M/T**
CMT 8



- 坚固胎体
- 强劲抓地
- 极致越野

专业的越野轮胎，应对各种恶劣路况



YUNCHANG **M/T** **CMT 8**

寸数	规格	负荷指数	层级	速度级别	标准轮辋	断面宽 mm	外直径 mm	最大使用负荷				最大使用气压		UTQG
								单胎 kg	LBS	双胎 kg	LBS	kPa	P.S.I	
15	215/75R15LT	100/97	6PR	Q	6J	216	703	800	1765	730	1610	350	50	-
15	235/75R15LT	104/101	6PR	Q	6 1/2 J	235	733	900	1985	825	1820	350	50	-
15	30X9.50R15LT	104	6PR	Q	7 1/2 J	240	750	900	1985	-	-	350	50	-
16	245/75R16LT	120/116	10PR	R	7 J	248	774	1380	3042	1260	2778	550	80	-
16	265/75R16LT	123/120	10PR	R	7 1/2 J	267	804	1550	3415	1400	3085	550	80	-
17	265/70R17LT	118/115	8PR	S	8 J	272	804	1320	2910	1215	2680	450	65	-



花纹块底部增强结构

花纹块底部边缘增加花纹块增强结构，增强花纹块强度，提供更加有力的抓地性能。



高强度花纹块

耐磨型橡胶配方，提升轮胎花纹块的强度；大花纹块，更加强壮，刚性更强，不易变形，增加承载能力。



强抓地性能

花纹沟槽交错连贯，外观犀利，抓地力强大。



沟底弹石装置

泥土路、河床、沙土、雨林抓地性能更出众。



强壮的侧面防护

胎侧花纹更加厚实，外观富有立体感，更加强壮犀利，为胎侧提供有效防护；胎侧肩部花纹增加凸起结构，形成错位，棱角分明，提供额外抓地性能。



增强化轮廓结构

胎面更平，抓地力更强；保护型胎侧，避免意外刮伤；胎侧加强胎体结构，刚性更强；轮廓保护结构，有效防护轮胎损伤。